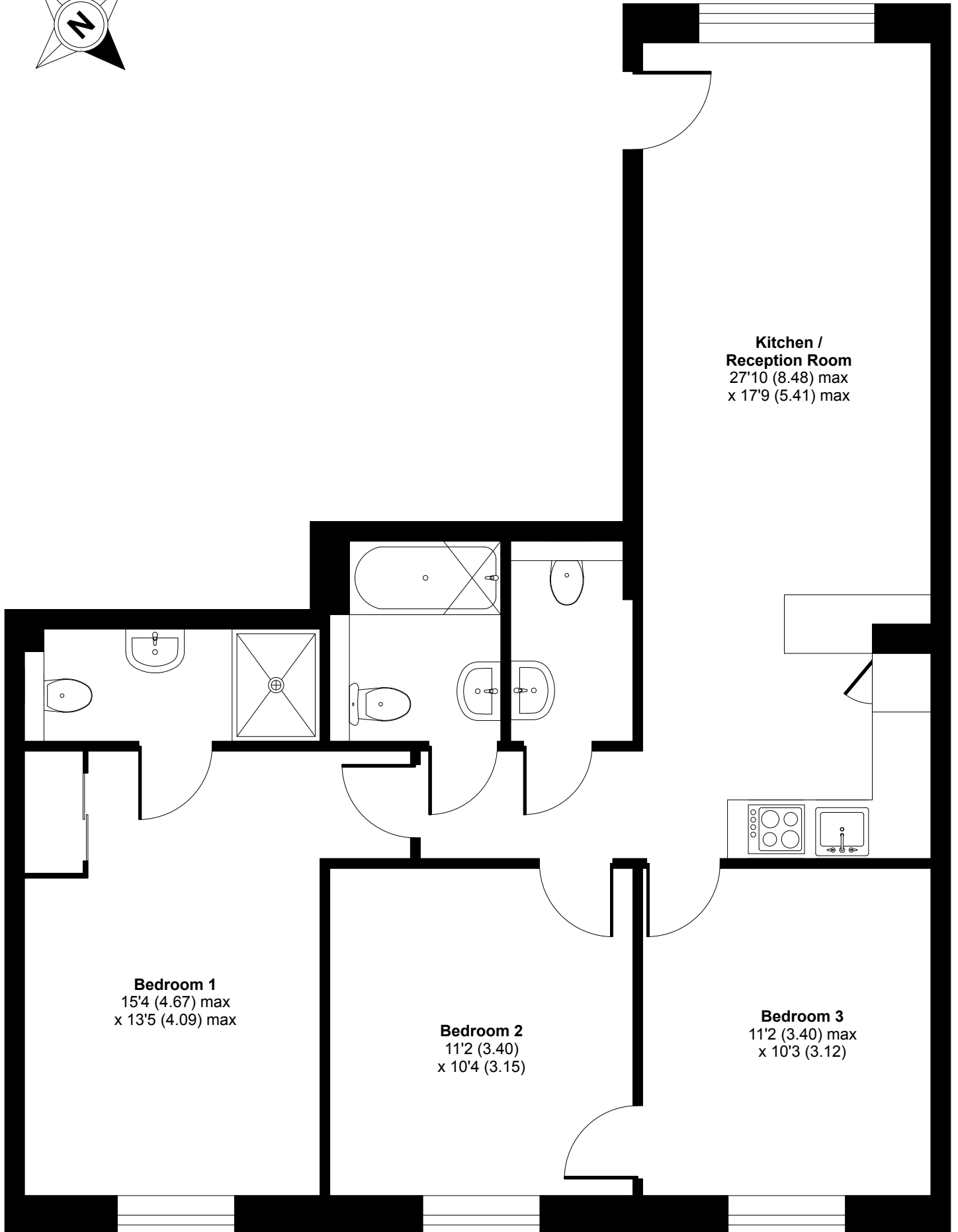


Maygrove Road, London, NW6

Approximate Area = 854 sq ft / 79.3 sq m

For identification only - Not to scale



GROUND FLOOR



Floor plan produced in accordance with RICS Property Measurement Standards incorporating International Property Measurement Standards (IPMS2 Residential). © n1che.com 2023. Produced for Aston Gray. REF: 991684